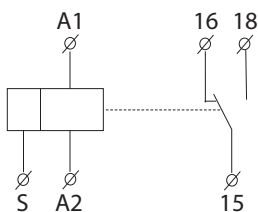




EAN code  
CRM-2H/230V: 8595188124201  
CRM-2H/UNI: 8595188113007

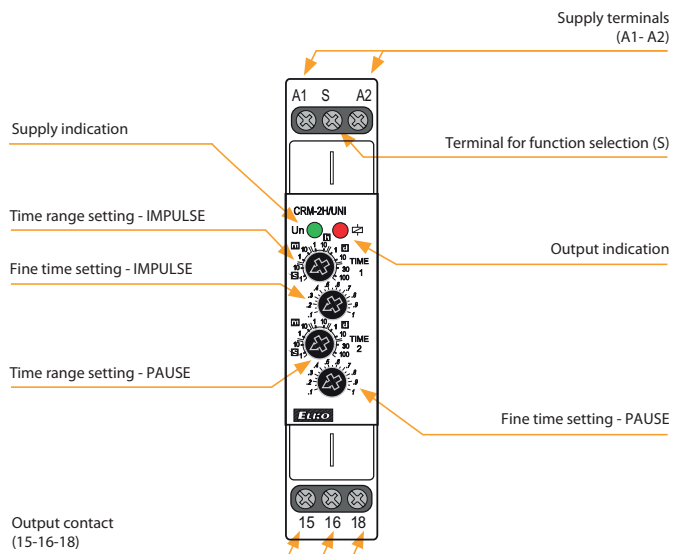
Technical parameters		CRM-2H
<b>Power supply</b>		
Supply terminals:		A1 - A2
Voltage range:	UNI	AC/DC 12 - 240 V (AC 50-60 Hz)
Power input (max.):		2 VA/1.5 W
Voltage range:	230	AC 230 V (50/60 Hz)
Power input (max.):		AC 3 VA/1.4 W
Supply voltage tolerance:		-15 %; +10 %
Supply indication:		green LED
<b>Function</b>		
Time scale:		0.1 s - 100 days
Time setting:		rotary switch and potentiometer
Time deviation:		5 % - mechanical setting
Repeat accuracy:		0.2 % - set value stability
Temperature coefficient:		0.01 %/°C, at = 20°C (0.01 %/°F, at = 68°F)
<b>Output</b>		
Number of contacts:		1x changeover/SPDT (AgNi)
Current rating:		16 A/AC1; 1 HP 240 Vac, 1/2 HP 120 Vac; PD. B300
Breaking capacity:		4000 VA/AC1, 384 W/DC
Inrush current:		30 A/< 3 s
Switching voltage:		250 V AC/24 V DC
Max. power dissipation:		1.2 W
Output indication:		multifunction red LED
Mechanical life:		10.000.000 ops.
Electrical life (AC1):		100.000 ops.
Reset time:		max. 150 ms
<b>Other information</b>		
Operating temperature:		-20 .. 55 °C (-4 .. 131 °F)
Storage temperature:		-30 .. 70 °C (-22 .. 158 °F)
Dielectric strength:		4 kV AC (supply - output)
Operating position:		any
Mounting:		DIN rail EN 60715
Protection degree:		IP40 from front panel/IP20 terminals
Overvoltage category:		III.
Pollution degree:		2
Terminal wire capacity (mm²):		solid wire max. 1x 2.5 or 2x 1.5/ with sleeve max. 1x 2.5 (AWG 12)
Dimensions:		90 x 17.6 x 64 mm (3.5" x 0.7" x 2.5")
Weight		UNI - 61 g (2.2 oz.), 230 - 58 g (2 oz.)
Standards:		EN 61812-1

### Symbol



- Flasher with independent adjustable switch ON and switch OFF.
- Used for regular room ventilation, cyclic dehumidification, light control, circulating pumps, illuminated advertising, etc.
- 2 time functions:
  - 1) Asymmetric FLASHER - ON first
  - 2) Asymmetric FLASHER - OFF first
- Function choice is done by an external jumper of terminals S-A1.
- Time scale 0.1 s - 100 days divided into 10 time ranges.
- Time range setting via rotary switch.
- Fine time setting by potentiometer.
- Multifunction red LED flashes or shines depending on the operating status.

### Description

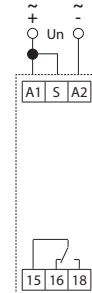


### Connection

#### Asymmetric FLASHER - ON first

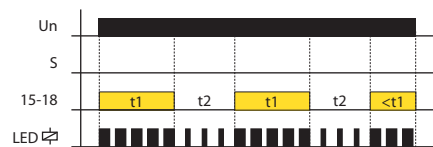


#### Asymmetric FLASHER - OFF first (jumper S-A1)



### Function

#### Asymmetric FLASHER - ON first



#### Asymmetric FLASHER - OFF first

