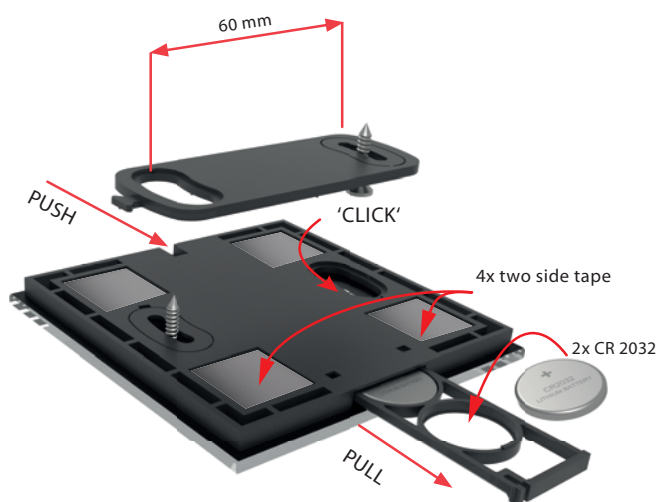
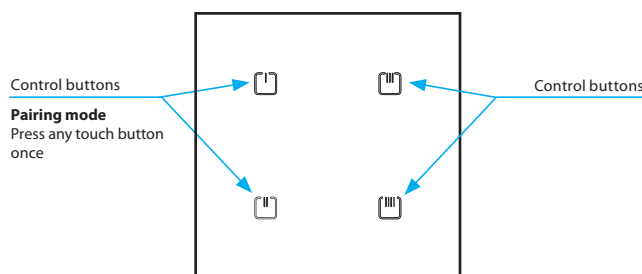


EAN code:
RFGB-40W/MT: 8595188189774
RFGB-40B/MT: 8595188189767

Technical parameters	RFGB-40B/MT, RFGB-40W/MT
Supply voltage:	2x 3 V CR 2032 batteries
Battery life:	around 2 years based on frequency of use
Transmission indication:	red LED
Number of capacitive buttons:	4
Application protocol:	Matter
Communication protocol:	THREAD
Frequency:	2.4 GHz
Signal transmission method:	MESH
Range:	in open space up to 200 m
Other data	
Operating temperature:	-10 to +50 °C
Operating position:	any
Mounting:	glue/screws
Protection:	IP20
Contamination degree:	2
Dimensions:	94 x 94 x 8 mm
Weight:	101 g
Related standards:	EN 60730, EN 63044, EN 301489, EN 300328

- Glass touch controller in an elegant black or white glass variant with a width of only 8 mm.
- Communicating on the Thread protocol, which guarantees compatibility with other Matter-enabled products.
- 4 capacitive buttons allow you to control 4 independent devices.
- After pressing the button, it sends the set command (short press, long press). Sending a command is indicated by a red LED.
- The flat mounting base allows installation with screws, double-sided tape or placement on the table.
- Battery power (2x 3 V batteries CR 2032 - part of the package) with a lifespan of approx. 2 years depending on the frequency of use.
- Range up to 200 m (in open space).
- The element with the actuator can be paired through a border router supporting Matter and through an application supporting Matter. The border router is understood as equipment such as HomePod Mini, Google Nest Hub or Samsung SmartThings Station.

Device description



Device pairing

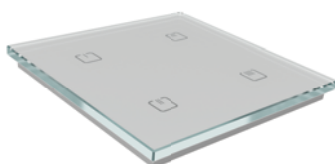
Before pairing a Matter device using a Matter QR code or numerical code, the device must be put into pairing mode.

To enter **pairing mode**, press any touch button once.

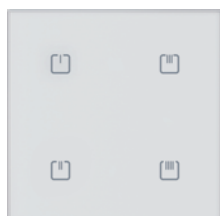
To pair an already configured device, it needs to be reset to **factory settings**. This is done by pressing and holding all four touch buttons on the controller for more than 10 seconds (simulating the PROG button).

Entering the pairing mode is signaled by short flashes of the red LED

Variants



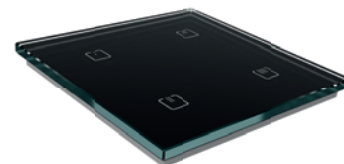
RFGB-40W/MT



RFGB-40W/MT



RFGB-40B/MT



RFGB-40B/MT